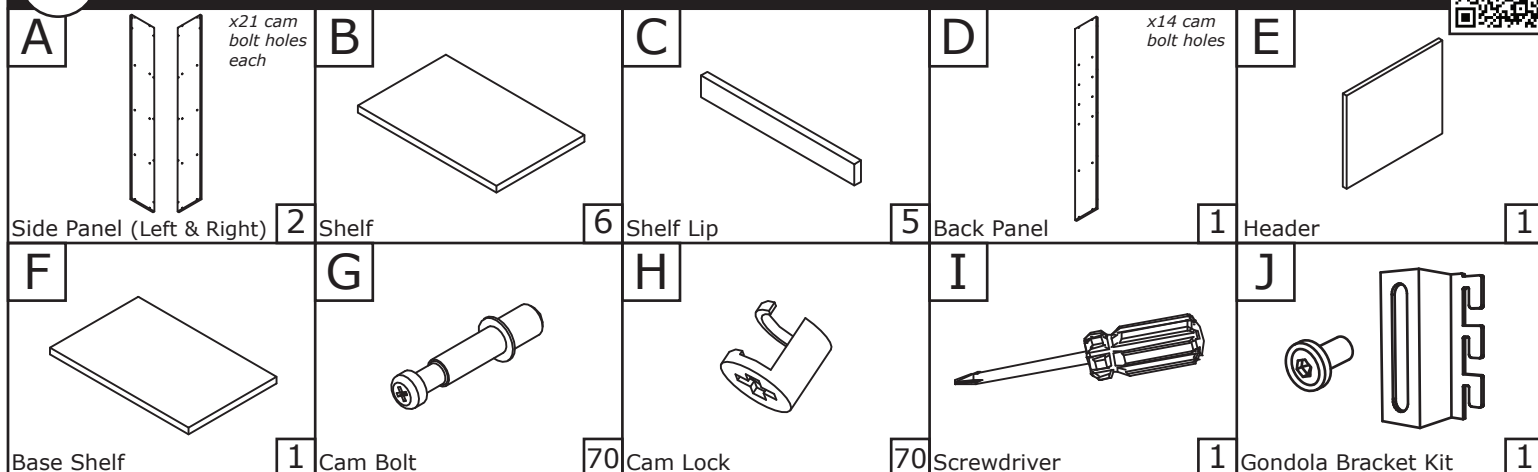


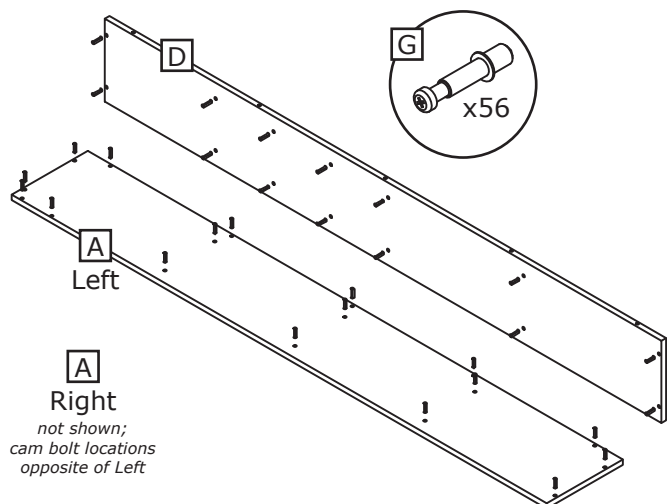


Scan the QR code or visit the web address directly to view the assembly video: displaybuilds.com/c4

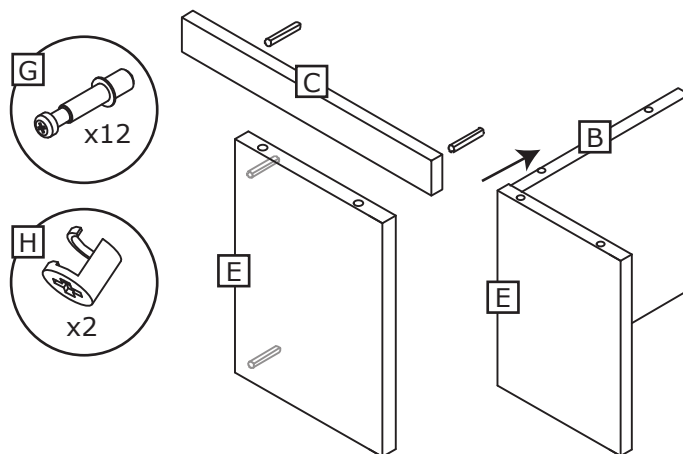


● Note: lay panels on a soft cloth or other smooth surface to prevent scratching during assembly. ●

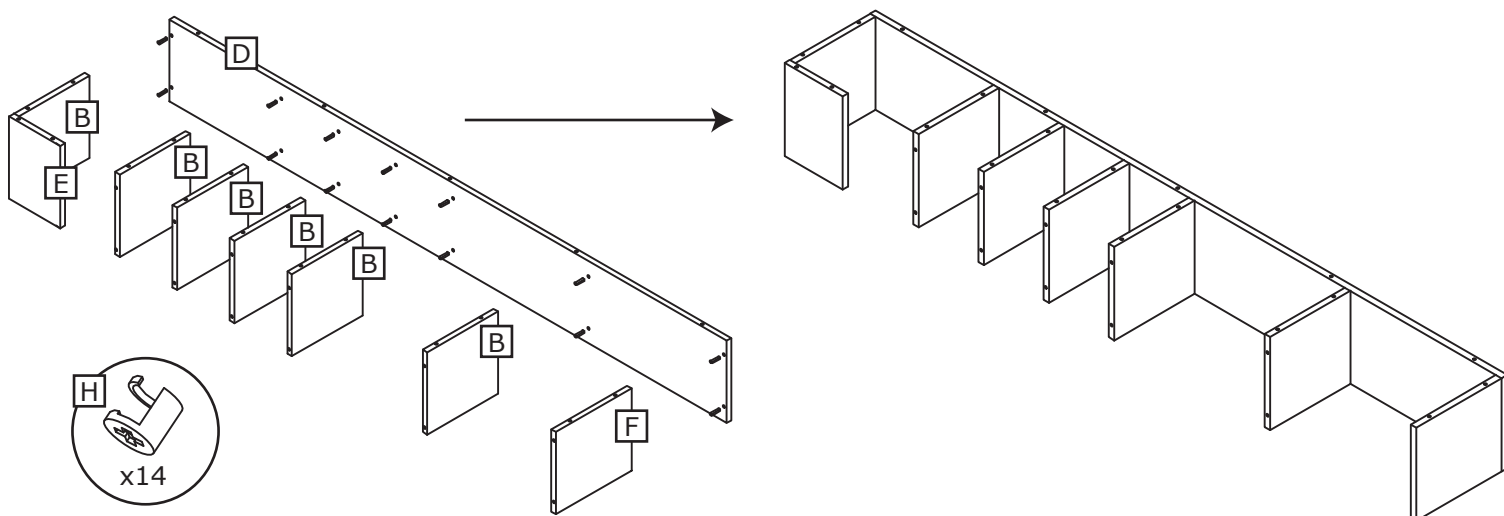
- 1**
- Install x14 (G) Cam Bolts into the (D) Back Panel.
 - Install x21 (G) Cam Bolts into each Left & Right (A) Side Panel.
 - Tighten each with (I) Screwdriver.



- 2**
- Install x2 (G) Cam Bolts into each (C) Shelf Lip.
 - Install x2 (G) Cam Bolts into (E) Header.
 - Tighten each with (I) Screwdriver.
 - Place x2 (H) Cam Locks into the bottom front of one (B) Shelf, and insert the (G) Cam Bolts on the (E) Header; tighten (H) Cam Locks with (I) Screwdriver to lock into place around the inserted (G) Cam Bolts.



- 3**
- Place x14 (H) Cam Locks into the back bottom of each (B) & (F) Shelf.
 - Slide the (G) Cam Bolts on the (D) Back Panel into each (B) & (F) Shelf.
 - Tighten each (H) Cam Lock with (I) Screwdriver to lock into place around the inserted (G) Cam Bolts.

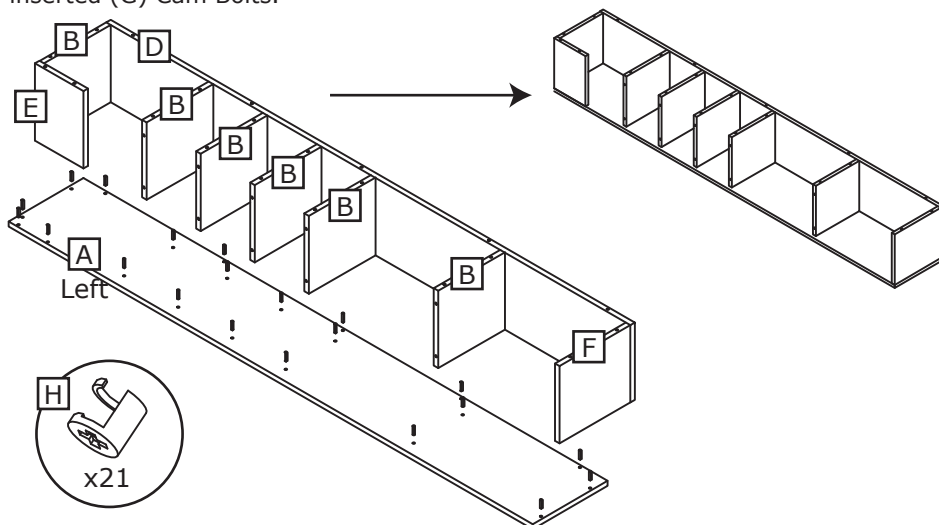




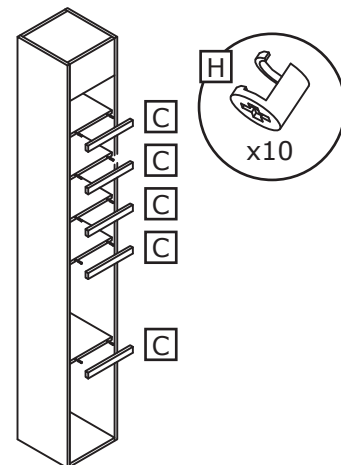
Scan the QR code or visit the web address directly to view the assembly video: displaybuilds.com/c4



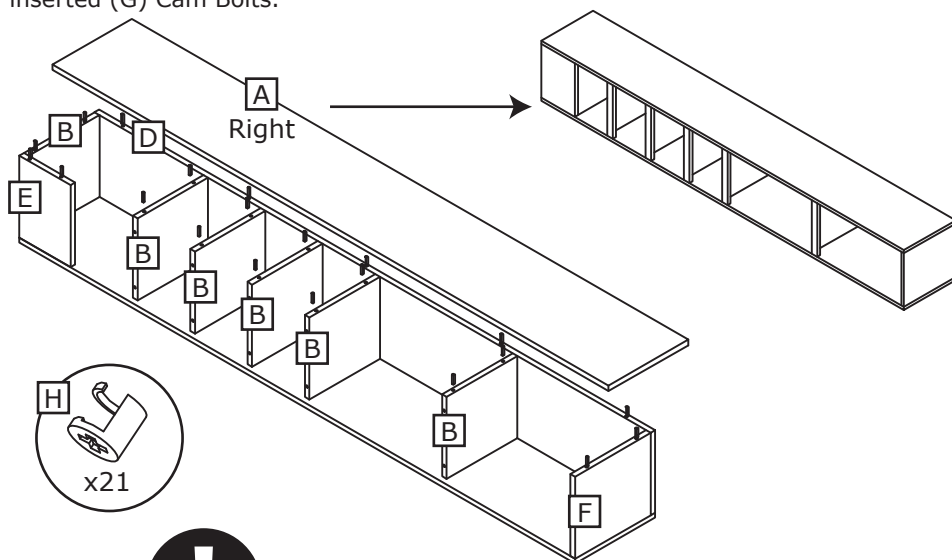
- 4**
- Place x21 (H) Cam Locks into the left bottom of each (B) & (F) Shelf, the back left of the (D) Back Panel, and the back left of the (E) Header.
 - Slide the (B) & (F) Shelves, (D) Back Panel, and (E) Header down onto the (G) Cam Bolts in the left (A) Side Panel.
 - Tighten each (H) Cam Lock with (I) Screwdriver to lock into place around the inserted (G) Cam Bolts.



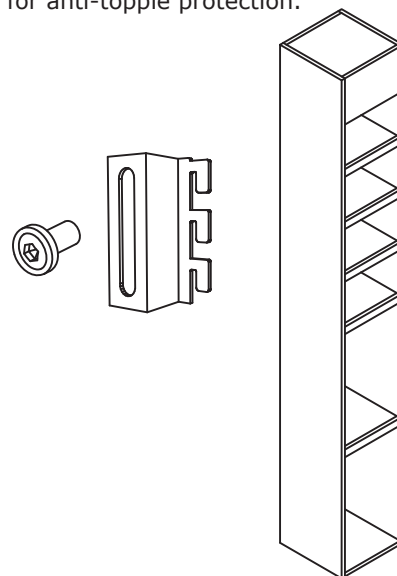
- 6**
- Carefully stand display up.
 - Insert x2 (H) Cam Locks into the bottom front of each (B) Shelf and insert (G) Cam Bolts on (C) Shelf Lips into the front of each.
 - Tighten each (H) Cam Lock with (I) Screwdriver to lock into place around the inserted (G) Cam Bolts.



- 5**
- Place x21 (H) Cam Locks into the right bottom of each (B) & (F) Shelf, the back right of the (D) Back Panel, and the back right of the (E) Header.
 - Slide the (G) Cam Bolts in the right (A) Side Panel down into each (B) & (F) Shelf and (E) Header.
 - Tighten each (H) Cam Lock with (I) Screwdriver to lock into place around the inserted (G) Cam Bolts.



- 7**
- Install (J) Gondola Bracket on the back of the assembled display and hand tighten bolts so it remains adjustable. Insert hook into Gondola for anti-topple protection.



MISSING PARTS / DAMAGE CLAIM INSTRUCTIONS

- DO NOT** discard the box or original packaging.
In the case of damaged goods caused by shipping, photo evidence will be required.
- Take photos of the box & markings.
A photo of the markings (text) on the side of the box is required for all cases in which a replacement part is needed. This helps to identify the item number and ensures the correct parts are pulled.
- Take photos of damage (if applicable).
A photo of the damaged part(s) is always required to file a claim and expediently process the replacement part. Please make sure you keep the box even if it is damaged.
- Send an email with the images requested.
Email a description of the claim along with the images required above at displaybuilds.com/contact or directly to help@displaybuilds.com. Call our toll-free number 1-866-308-8368 for further assistance.